



LA BOTTE GARDIANE

SAVOIR-FAIRE D'EXCEPTION DEPUIS 1958

GAMME CUIRS ET COULEURS

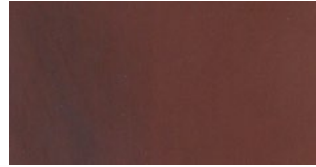
CUIR GRAS PLEINE FLEUR



Noir - SUP01



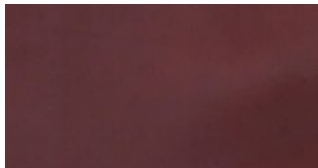
Café - SUP02



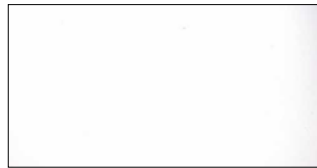
Marron - SUP03



Naturel - SUP04

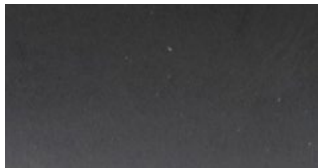


Bordeaux - SUP09

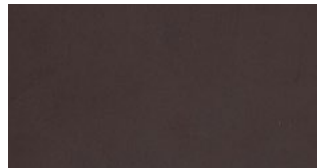


Blanc - SUP10

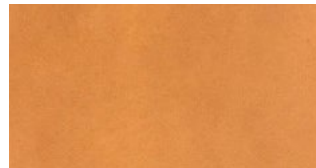
CUIR TANNAGE VÉGÉTAL



Ébène - VEG01



Merisier - VEG03

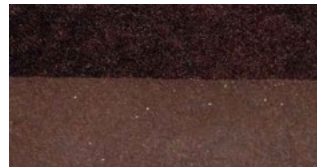


Chêne - VEG04

CUIR MOUTON



Noir - MT01



Café - MT02



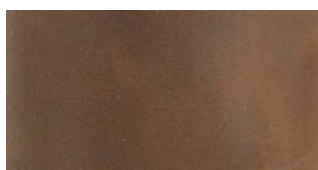
Naturel - MT04

CROUPON CAMARGUE



Chair - B14

CROÛTE DE CUIR



Croûte cirée - B02



LA BOTTE GARDIANE

SAVOIR-FAIRE D'EXCEPTION DEPUIS 1958

CUIR SOUPLE PLEINE FLEUR



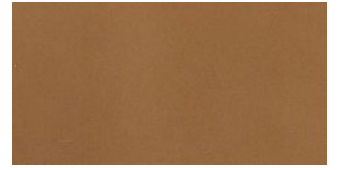
Noir - VS01



Sanglier - VS02



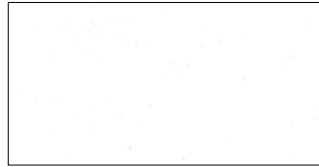
Marron - VS03



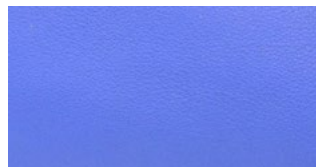
Naturel - VS04



Marine - VS05



Blanc - VS10



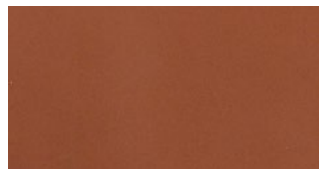
Côte bleu - VS15



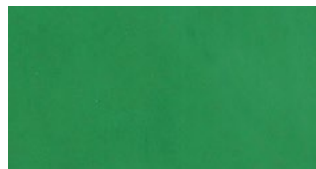
Jaune soleil - VS17



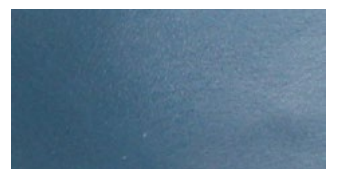
Bordeaux - VS19



Cognac - VS23



Menthe - VS24



Bleu canard - VS25



Vert impérial - VS27



LA BOTTE GARDIANE

SAVOIR-FAIRE D'EXCEPTION DEPUIS 1958

CUIR VELOURS



Charbon - CRT01



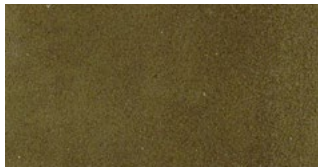
Chocolat - CRT02



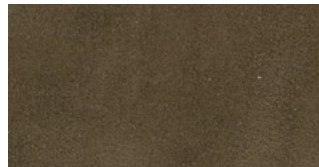
Écureuil - CRT04



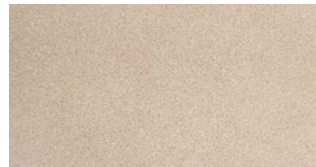
Bleu - CRT05



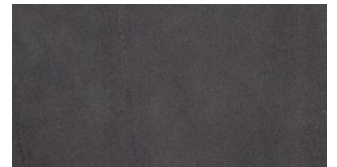
Olive - CRT07



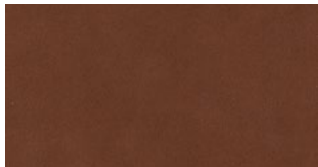
Taupe - CRT09



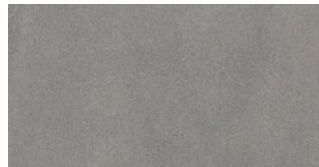
Beige - CRT10



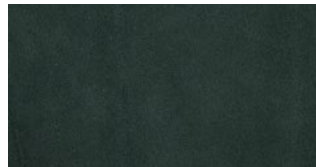
Graphite - CRT11



Rouille - CRT13



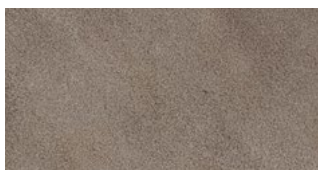
Gris - CRT18



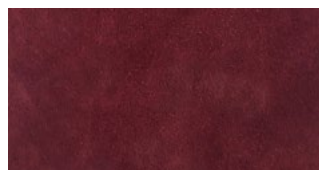
Vert de gris - CRT24



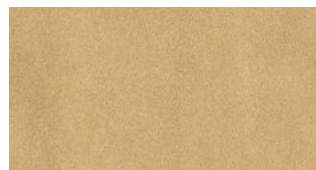
Vert Forêt - CRT27



Gris poudré - CRT28

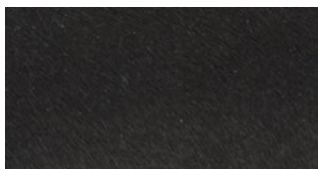


Bordeaux - CRT29

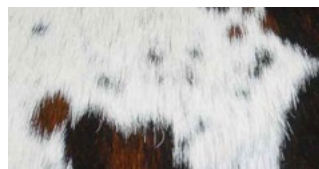


Havane - CRT34

CUIR AVEC POILS



Noir - PL01



Vache Normande - PL03